

# The Curious Incident of the Dog in the Night-time

## One Pager Project

A one-pager is a collage of illustrations and written analyses on a single page that together create an aesthetically pleasing and detailed interpretation of a subject or piece of literature.

### Directions:

Share your unique understanding of the text on one page by imaginatively blending your written ideas with colorful images related to the story. You should spend at least 30 minutes reading and/or brainstorming ideas before you begin decorating your page. It's recommended you begin with pencil first for your design so it's easy to make changes before finalizing your work in ink or color. Use a standard-size piece of blank paper (8.5 x 11) or a template may be provided for you. Your page can be horizontal or vertical.

Below is a list of what should be included on your page:

- State the title of the novel and the author's name
- Analyze one theme or message from the novel, using an example for support
- Describe one example of symbolism in the novel
- Explain one conflict (internal or external) in the story
- Include a description of a major character
- Choose **four** or more of the following literary elements to incorporate as they apply to the novel specifically: *antagonist, protagonist, irony, genre, point of view, climax, resolution, setting, foreshadowing, motif, mood, tone, imagery, or any example of figurative language*
- Draw a minimum of **four** illustrations that are directly related to the novel in some way
- You must fill your entire page
- Your page must be colored

### Grading Rubric

|                            |  |           |
|----------------------------|--|-----------|
| <b>Overall Appearance</b>  | Your page is detailed and neat. Images are clear and text is easy to read. The overall appearance is creative and aesthetically pleasing.  | 10 Points |
| <b>Information</b>         | Your explanations and references are accurate. You include all the required components from the directions.  | 10 Points |
| <b>Analysis</b>            | You demonstrate you understand the literature through your examples and commentaries. The literary elements you choose are insightful and depict important ideas from the story. | 10 Points |
| <b>Writing Conventions</b> | You use proper grammar, punctuation, spelling, and usage. Effective word choice demonstrates a strong understanding of context and purpose.                                      | 10 Points |
| <b>Graphics</b>            | You choose illustrations that highlight meaningful parts of the story. The graphic elements are neat, colored, and incorporated seamlessly into the work.                        | 10 Points |

**50 Points**

**PREVIEW**

**NOT FOR EDUCATIONAL USE**



**PREVIEW**

**NOT FOR EDUCATIONAL USE**

**PREVIEW**

**NOT FOR EDUCATIONAL USE**

**PREVIEW**

**NOT FOR EDUCATIONAL USE**

PREVIEW

NOT FOR EDUCATIONAL USE

PREVIEW

NOT FOR EDUCATIONAL USE

PREVIEW

NOT FOR EDUCATIONAL USE



PREVIEW

NOT FOR EDUCATIONAL USE

PREVIEW

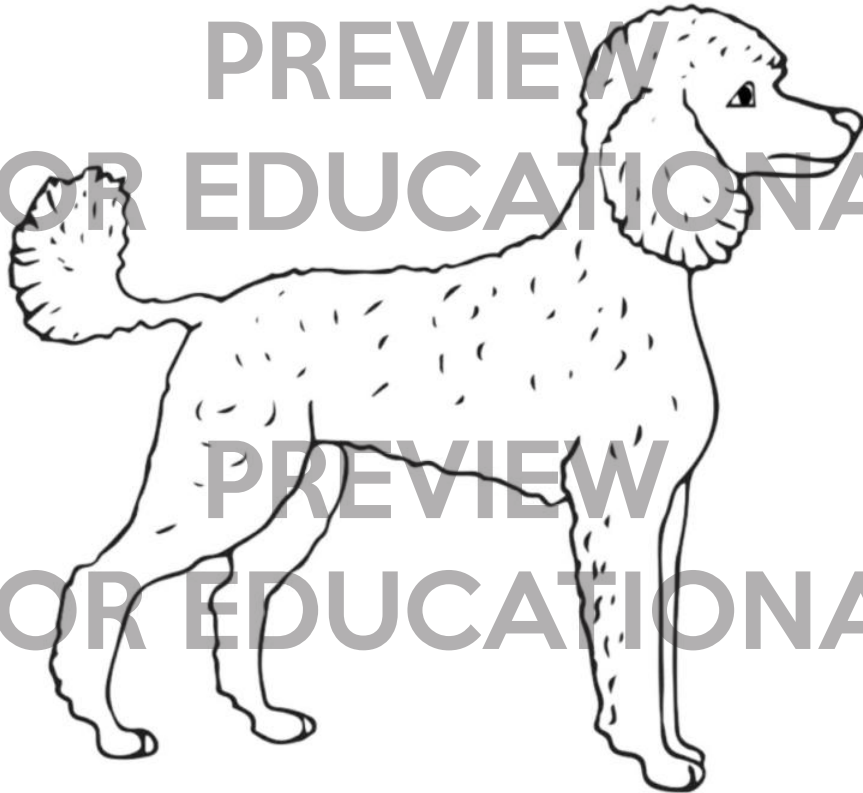
NOT FOR EDUCATIONAL USE

PREVIEW

NOT FOR EDUCATIONAL USE

PREVIEW

NOT FOR EDUCATIONAL USE



PREVIEW

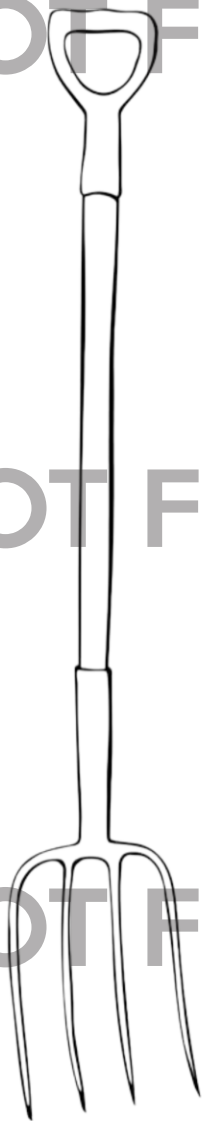
NOT FOR EDUCATIONAL USE

**PREVIEW**  
**NOT FOR EDUCATIONAL USE**

**PREVIEW**  
**NOT FOR EDUCATIONAL USE**

**PREVIEW**  
**NOT FOR EDUCATIONAL USE**

**PREVIEW**  
**NOT FOR EDUCATIONAL USE**



PREVIEW  
NOT FOR EDUCATIONAL USE

PREVIEW  
NOT FOR EDUCATIONAL USE

PREVIEW  
NOT FOR EDUCATIONAL USE

PREVIEW  
NOT FOR EDUCATIONAL USE

PREVIEW

NOT FOR EDUCATIONAL USE

PREVIEW

NOT FOR EDUCATIONAL USE

PREVIEW

NOT FOR EDUCATIONAL USE

PREVIEW

NOT FOR EDUCATIONAL USE

PREVIEW  
NOT FOR EDUCATIONAL USE

PREVIEW  
NOT FOR EDUCATIONAL USE

PREVIEW  
NOT FOR EDUCATIONAL USE

PREVIEW  
NOT FOR EDUCATIONAL USE



PREVIEW

NOT FOR EDUCATIONAL USE

PREVIEW

NOT FOR EDUCATIONAL USE

PREVIEW

NOT FOR EDUCATIONAL USE

PREVIEW

NOT FOR EDUCATIONAL USE

PREVIEW

NOT FOR EDUCATIONAL USE

PREVIEW

NOT FOR EDUCATIONAL USE

PREVIEW

NOT FOR EDUCATIONAL USE

PREVIEW

NOT FOR EDUCATIONAL USE

**PREVIEW**  
**NOT FOR EDUCATIONAL USE**

**PREVIEW**  
**NOT FOR EDUCATIONAL USE**

**PREVIEW**  
**NOT FOR EDUCATIONAL USE**

**PREVIEW**  
**NOT FOR EDUCATIONAL USE**

# PREVIEW

## The Curious Incident of the Dog in the Night-Time

MARK HADDON

Christopher Boone is the protagonist. He is determined, obsessive and intelligent. He's excellent at math and science. The novel's POV is first person, told by Christopher. It helps readers understand his everyday struggles and thoughts in a personal way. It also keeps the mystery of Wellington's death a secret. The genre is mainly a mystery beginning with a gruesome death. It is also bildungsroman as it goes through personal growth. Toby is Christopher's pet rat. He is a symbol of companionship and connection.

Christopher feels an internal conflict as he desires

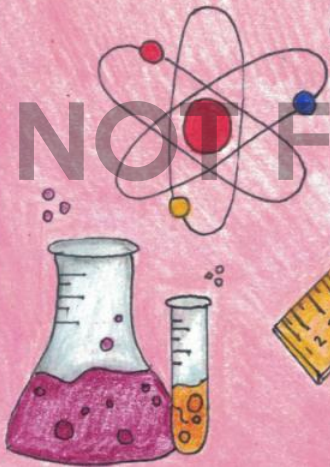
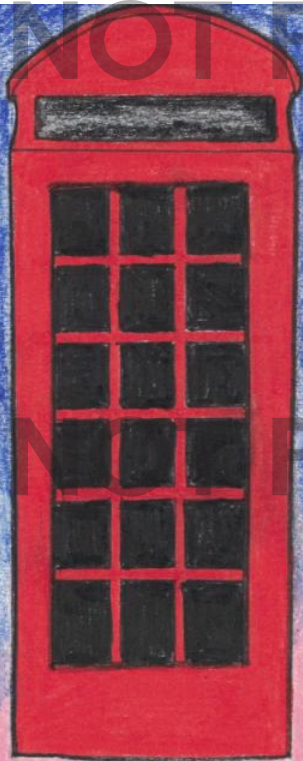
independence but struggles with sensory overload (loud noises and unfamiliar settings). He also struggles with his mother's death and understanding others.

Theme: Courage is found in the smallest acts, such as facing everyday challenges that feel overwhelming.

Example: Chris pushes himself to travel to London alone to find his mom.



Christopher's father is the antagonist. He forbids Chris from investigating the death of the dog. Ed is protective and supports Christopher in many ways but is flawed. He lies to Christopher and hides his mother's letters. Details of Chris's parents' marital problems and the odd circumstances around it foreshadow that something is a mess and Christopher's mother is actually still alive.



# NOT FOR EDUCATIONAL USE