

# Animal Farm

## One Pager Project

A one pager is a collage of illustrations and written analyses on one page that make up an aesthetically pleasing and detailed interpretation of a subject or piece of literature.

Share your unique understanding of the text on one page by imaginatively blending your written ideas with colorful images from the story. You should spend at least 30 minutes reading and or brainstorming ideas before you begin decorating your page. It's recommended you begin with pencil first for your design so it's easy to make changes before finalizing your work in ink or color.

Use a standard size piece of blank paper (8.5 x 11) or a template may be provided for you. Your page can be horizontal or vertical.

Below is a list of what should be included on your page:

- Include the title of the novella and the author's name
- Describe one theme from the novella with textual evidence
- Explain one allusion from the novella
- Analyze one example of irony from the novella
- Include one important quote from the story
- Choose four or more of the following literary elements to incorporate as it applies to the story specifically: allegory, symbolism, genre, setting, conflict, plot, foreshadowing, mood, tone, characterization, imagery, motif, or any example of figurative language
- Draw a minimum of four illustrations that are directly related to the novella in some way
- You must fill your entire page
- Your page must be colored

### Grading Rubric

|                            |  |           |
|----------------------------|--|-----------|
| <b>Overall Appearance</b>  | Your page is detailed and neat. Images are clear and text is easy to read. The overall appearance is creative and aesthetically pleasing.  | 10 Points |
| <b>Information</b>         | Your explanations and references are accurate. You include all the required components from the directions.  | 10 Points |
| <b>Analysis</b>            | You demonstrate you understand the literature through your examples and commentaries. The literary elements you choose are insightful and depict important ideas from the story. | 10 Points |
| <b>Writing Conventions</b> | You use proper grammar, punctuation, spelling, and usage. Effective word choice demonstrates a strong understanding of context and purpose.                                      | 10 Points |
| <b>Graphics</b>            | You choose illustrations that highlight meaningful parts of the story. The graphic elements are neat, colored, and incorporated seamlessly into the work.                        | 10 Points |

**50 Points**

PREVIEW

NOT FOR EDUCATIONAL USE

PREVIEW

NOT FOR EDUCATIONAL USE



PREVIEW

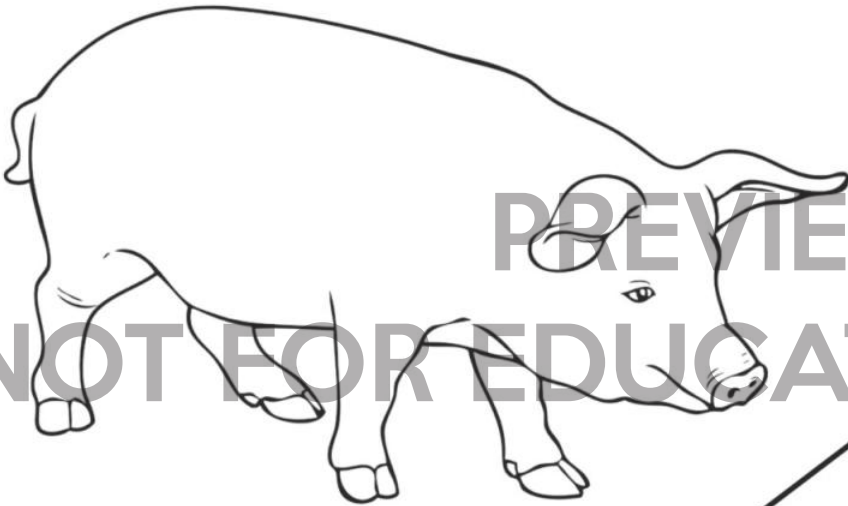
NOT FOR EDUCATIONAL USE

PREVIEW

NOT FOR EDUCATIONAL USE

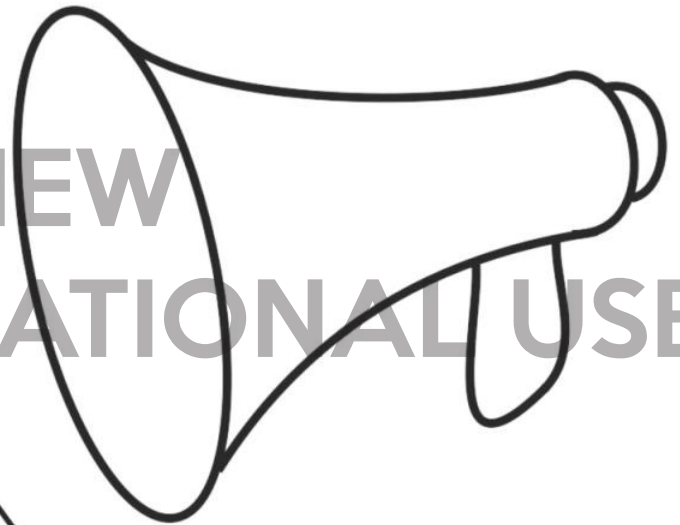
PREVIEW

NOT FOR EDUCATIONAL USE



PREVIEW

NOT FOR EDUCATIONAL USE



PREVIEW

NOT FOR EDUCATIONAL USE

PREVIEW

NOT FOR EDUCATIONAL USE

PREVIEW

NOT FOR EDUCATIONAL USE

PREVIEW

NOT FOR EDUCATIONAL USE



PREVIEW

NOT FOR EDUCATIONAL USE

PREVIEW

NOT FOR EDUCATIONAL USE

PREVIEW

NOT FOR EDUCATIONAL USE

PREVIEW

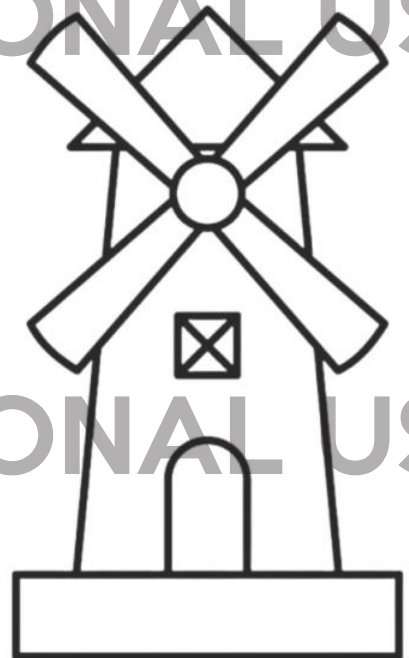
NOT FOR EDUCATIONAL USE

PREVIEW

NOT FOR EDUCATIONAL USE

PREVIEW

NOT FOR EDUCATIONAL USE



PREVIEW

NOT FOR EDUCATIONAL USE



PREVIEW

NOT FOR EDUCATIONAL USE

PREVIEW

NOT FOR EDUCATIONAL USE

PREVIEW

NOT FOR EDUCATIONAL USE

PREVIEW

NOT FOR EDUCATIONAL USE

PREVIEW

NOT FOR EDUCATIONAL USE

PREVIEW

NOT FOR EDUCATIONAL USE



PREVIEW

NOT FOR EDUCATIONAL USE

PREVIEW  
NOT FOR EDUCATIONAL USE

PREVIEW  
NOT FOR EDUCATIONAL USE

PREVIEW  
NOT FOR EDUCATIONAL USE

PREVIEW  
NOT FOR EDUCATIONAL USE



PREVIEW

NOT FOR EDUCATIONAL USE

PREVIEW

NOT FOR EDUCATIONAL USE

PREVIEW

NOT FOR EDUCATIONAL USE



PREVIEW

NOT FOR EDUCATIONAL USE

PREVIEW

NOT FOR EDUCATIONAL USE

PREVIEW

NOT FOR EDUCATIONAL USE



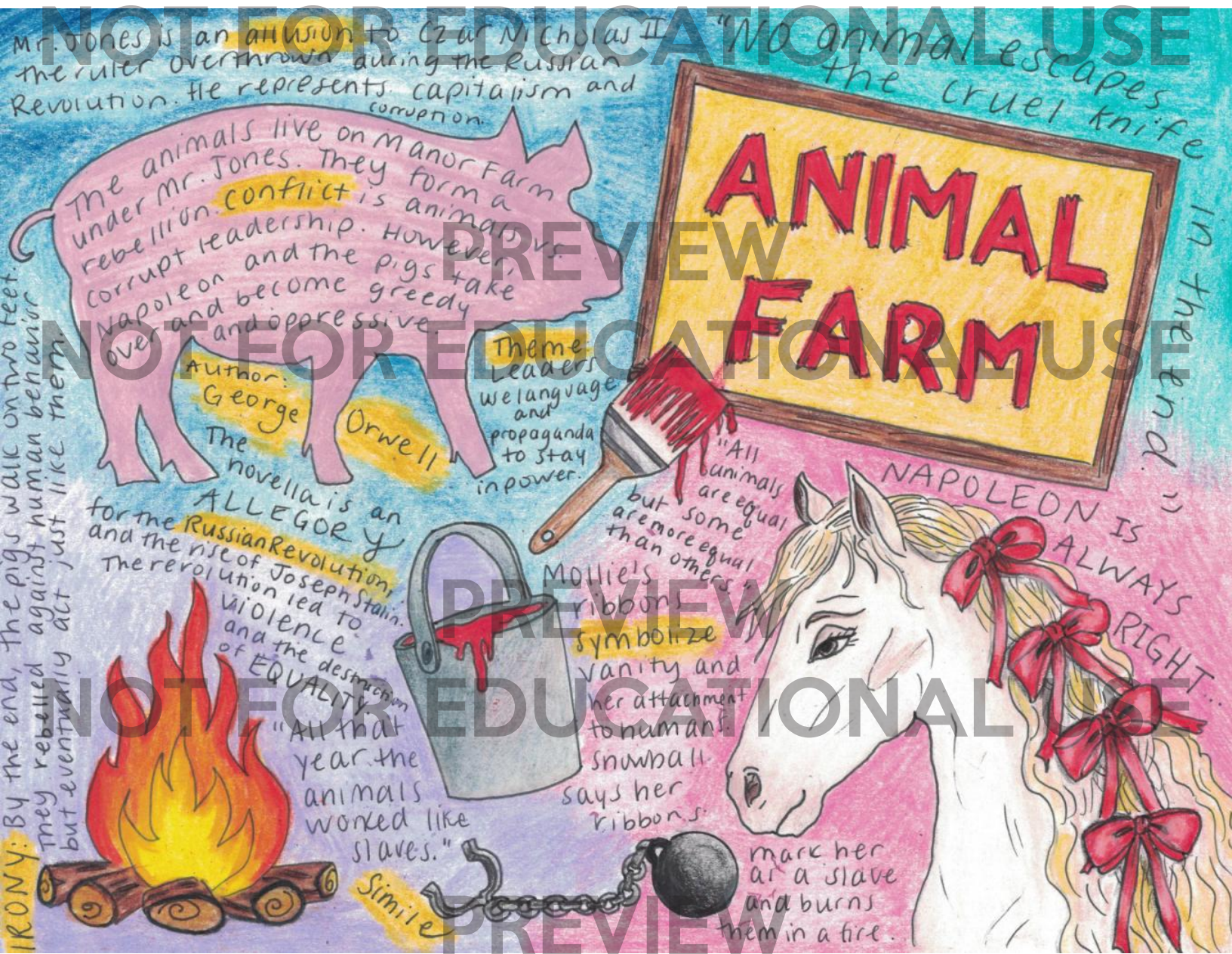
PREVIEW

NOT FOR EDUCATIONAL USE

PREVIEW

NOT FOR EDUCATIONAL USE

# PREVIEW



NOT FOR EDUCATIONAL USE